







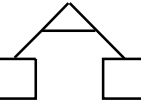
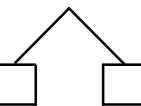
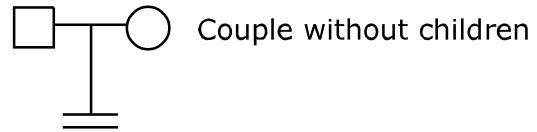
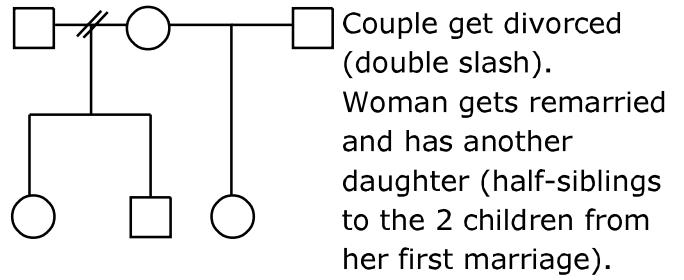
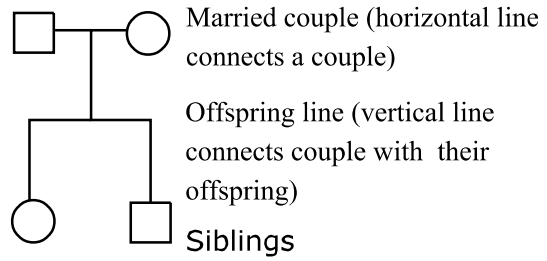
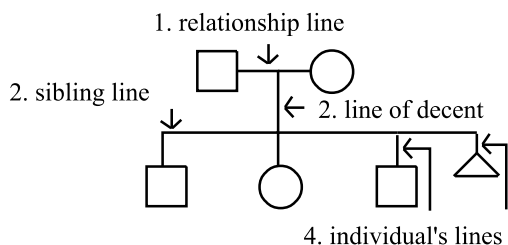


-  Male
-  Female
-  Person of unknown sex
-  Pregnancy
-  Affected male
-  Proband (who is also affected)
-  Carrier male
-  Deceased female
-  Identical (monozygotic) twins
-  Fraternal (diaygotic) twins



### Definitions



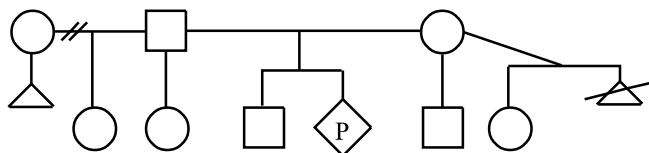
### Comments

If possible, male partner should be to left of female partner on relationship line

Siblings should be listed from left to right in birth order (oldest to youngest)

For pregnancies not carried to term (SABs & TOPs), the individual's line is shortened

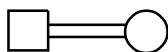
### Relationships



### Comments

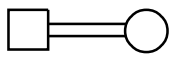
A break in a relationship line indicates the relationship no longer exists. Multiple previous partners do not need to be shown if they do not affect genetic assessment.

### Consanguinity



### Comments

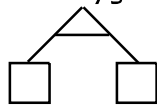
If degree of relationship not obvious from pedigree, it should be stated (e.g., third cousins) above relationship line



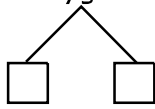
If degree of relationship not obvious from pedigree, it should be stated (e.g., third cousins) above relationship line

**Twins**

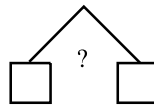
Monozygotic



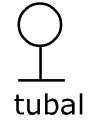
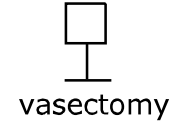
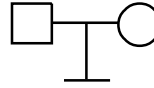
Dizygotic



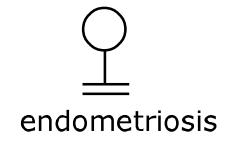
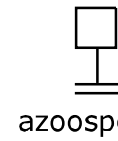
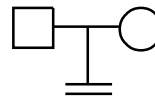
Unknown



**No children by choice or reason unknown**



**Infertility**



**Adoption**

